

Date: April - 21

VFP-PP-014 - Ver: 2

Operation Control

(Canine Pancreatic Lipase Test kit Procedure)

Compiled by:

Mudher Al-rahmani

Practice Manager |

Vets for **Pets** Glenfield | 5/95 Harrow Rd. Glenfield 2167 NSW

Tel: 02 9618 1162 | 0450 050 574

Table of Contents

1.1. Scope.....	3
1.2. General Requirements.....	3
2. Procedure.....	3
2.1 Kit components	3
2.2 Sample Information.....	4
2.3 Test Procedures.....	4
2.3 Interpreting the Test Results	5
2.4 Invalid Test Results.....	6



1. Purpose

This document is produced to determine the process of using cPL test kit.

1.1. Scope

This document is applicable to all departments of Vets for Pets.

1.2. General Requirements

1. All concerned personnel are responsible to ensure that work is carried out in compliance with this procedure.
2. Practice manager shall ensure that development, review, and improvement of this procedure is conducted at least once every year.
3. Development, review, and improvement of this procedure must be done in consultation with management team and vets.
4. This procedure to be documented and recorded as per the hospital document control procedure.

2. Procedure

2.1 Kit components

Each kit contains:

- One 4mL bottle of anit-chicken:HRPO/anti-cPL:HRPO conjugate.
- One reagent rack.
- Transfer pipettes.



- Sample tubes and SNAP devices contains 0.6mL of substrate solution.
- 0.4 mL of wash solution.

Kit to be stored at 2-8C until expiration date.

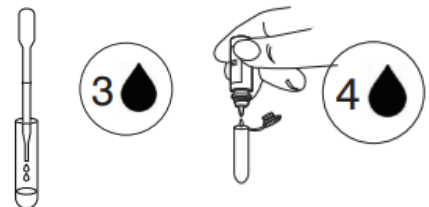
2.2 Sample Information

- Sample must be at room temperature (18-25C) before beginning the test procedure.
- Serum, either fresh or stored at 2-8C for up to one week, can be used.
- For long storage, serum can be frozen (-20C or colder) and then recentrifuged before use.
- Hemolyzed, icteric or lipemic samples will not affect test results.

2.3 Test Procedures

1. Allow all components to equilibrate at room temperature (18-25C) for at least 30 minutes. (DO NOT HEAT).

2. Using the pipette provided, dispense
3. **3 drops of sample** into a new sample tube.



4. Holding the bottle vertically, add
5. **4 Drops of conjugate** to the sample tube.



6. Cap the sample tube and mix thoroughly



7. by inverting it 3-5 times.

8. Place the device on a horizontal surface.

9. Add the entire contents of the sample

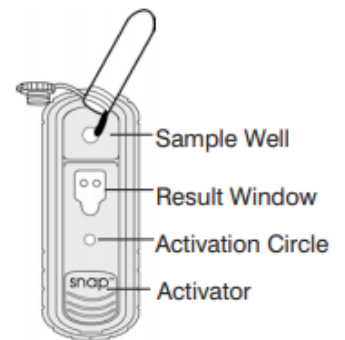
10. tube to the sample well, being careful not

11. to splash the contents outside of the sample wall.

12. The sample will flow across the result window,

13. Reaching the activation circle in 30-60 seconds.

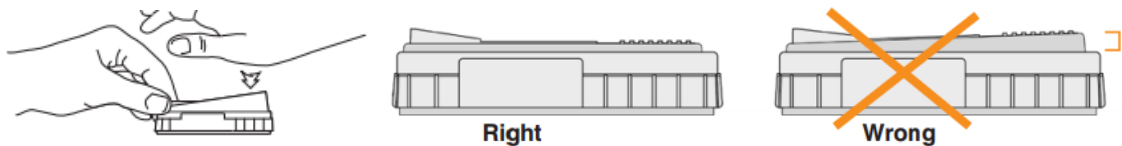
14. Some sample may remain in the sample well.



15. When color FIRST appears in the activation circle,

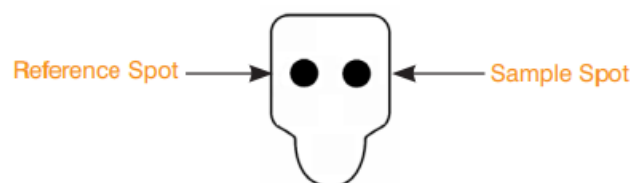
16. push the activator firmly until it is flush with

17. the device body. You will hear distinct "Snap"



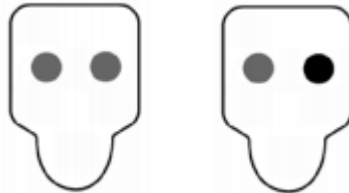
18. Read test results **10 minutes** from the time of activation.

2.3 Interpreting the Test Results



Abnormal Level

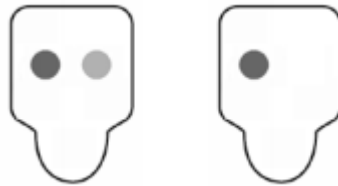
If the colour intensity of the sample spot is equal to or darker than the colour intensity of the reference spot, cPL levels are abnormal.



Normal Level

If the colour intensity of the sample spot is lighter than the colour intensity of the reference spot, cPL levels are normal.

Note: it is possible for no colour to develop on the sample spot.



2.4 Invalid Test Results

Background: if the sample is allowed to flow past the activation circle, background colour may result. Some background colour is normal. However, if coloured background obscures test result, repeat the test.

No Colour Development: if reference spot does not develop colour, repeat the test.

Name:

Signature:

